

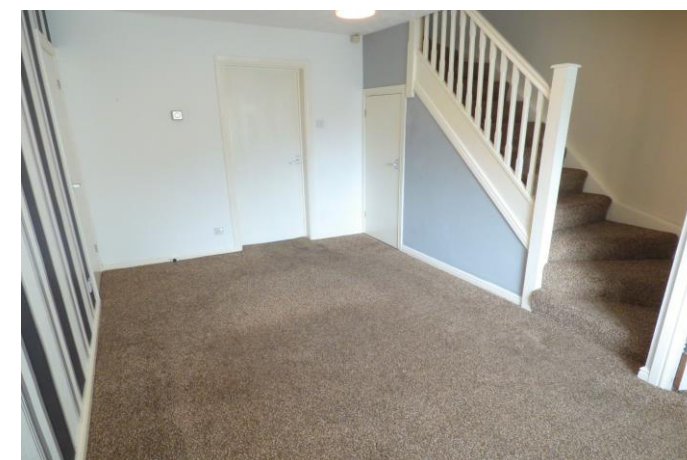
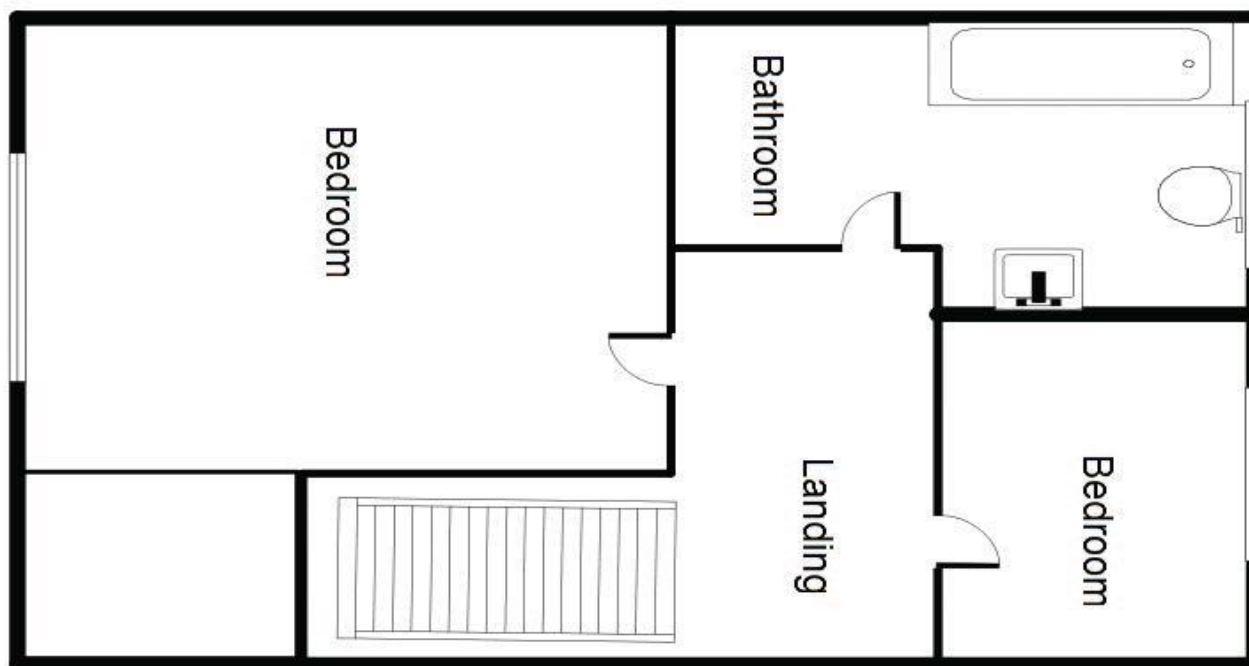
**SUMMARY**

EPC Rating D  
End Terraced House  
Two Bedrooms  
Dining Kitchen  
Unfurnished  
Available Immediately  
Garden to Rear  
Drive providing off street parking



**\*\*TWO BEDROOMS\*\*UNFURNISHED\*\*AVAILABLE SEPTEMBER\*\***

Beautifully presented throughout this two bedroom end terrace house is available to move into from early September. Located in Town End Farm this excellent property is close to local amenities and transport links as well as easy access to the A19 and Nissan. The accommodation includes entrance hall, lounge, dining kitchen, two bedrooms and family bathroom. Externally there is an enclosed garden to the rear with a drive providing off street parking to the front of the property. NOT TO BE MISSED!





**Bedroom Two** 9' 7" x 8' 9" (2.922m x 2.678m)  
Single rear facing bedroom.

**Family Bathroom** 10' 7" x 6' 3" (3.226m x 1.917m)  
A modern bathroom with white suite to include panel bath with overhead shower, WC, wash hand basin and heated towel rail.

**Outside**  
Externally there is an enclosed rear garden mainly laid to lawn with patio area and drive to the front of the property providing off street parking for a number of vehicles.

## ACCOMMODATION

### Entrance Hall

**Lounge** 15' 3" x 8' 10" (4.658m x 2.693m)  
Spacious lounge with two storage cupboards and stairs leading to first floor.

**Kitchen/Breakfast Room** 16' 2" x 6' 10" (4.938m x 2.077m)  
A modern fitted kitchen with a range of base and wall units with contrasting work surfaces, fridge freezer, washing machine, electric oven, gas hob and integrated dishwasher.

**Stairs to;**

### First Floor Landing

**Bedroom One** 12' 0" x 8' 6" (3.651m x 2.601m)  
Double bedroom with built in wardrobes.

