



**PURBECK  
PROPERTY**

**CELEBRATING 40 YEARS  
IN WAREHAM**

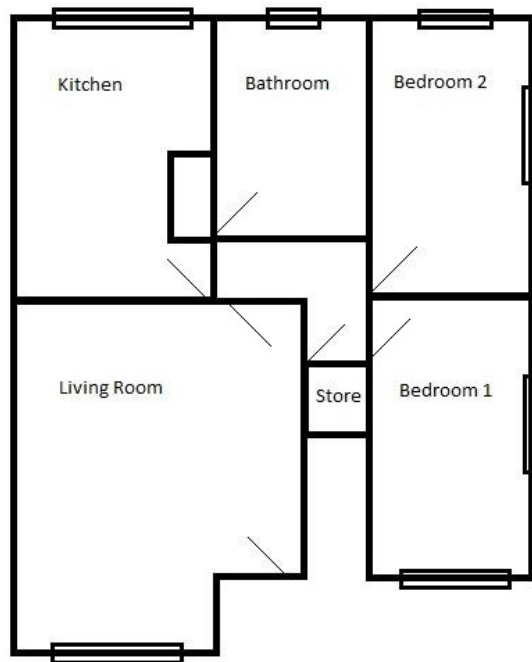
5 South Street  
Wareham  
Dorset  
BH20 4LR  
Tel 01929 556660

**A WELL PRESENTED TWO BEDROOM GROUND FLOOR FLAT  
SET IN THIS PICTURESQUE COASTAL VILLAGE.  
INTERNAL VIEWING RECOMMENDED**



# Chestnut Court, School Lane, West Lulworth BH20 5SN

**PRICE £239,950**



## Location:

The property is located in the picturesque coastal village of West Lulworth, just a short walk to the famous Lulworth Cove, Durdle Door & The Jurassic Coast. The towns of Wareham & Wool are a short driveway with their shops, amenities & main line railway to London.

Wareham is a Saxon Walled town with its main focal point of the town is its Quay with boat trips to Poole Harbour; with further benefits including Wareham Forest, independent cinema, sports centre, popular schools, restaurants, cafes, St Martins Church and the museum. There is also a market every Saturday.

# Chestnut Court, School Lane, West Lulworth BH20 5SN

## PRICE £239,950

### The Property:

This well presented flat is accessed via a double glazed front leading through into the entrance hallway, a further door leads through into living room which has a upvc double glazed window to the front aspect overlooking Bindon Hill. There is a wall mounted electric heater & access into an inner hallway which has wood laminate flooring throughout & an understairs storage space.

The wood laminate flows through into the kitchen which has a matching range of cupboards at base and eye level with soft closing drawers & a spacious larder cupboard. A four ring ceramic hob is set into the work surface with oven below and pullout extractor and light above; a sink with side drainer is set into the work surface with splashback tiling surrounding. There is space and plumbing for a washing machine & space for a tumble drier & for an upright fridge/freezer. A upvc double glazed window looks out over the rear to the communal garden.

The master bedroom is set at the front of the property and enjoys a double aspect with upvc double glazed windows to the front and to the side, the room benefits from a sliding door wardrobe with hanging rail and storage space above plus a wall mounted electric heater.

The second bedroom is a double sized room situated at the rear of the property with a upvc double glazed door out to the communal garden and a upvc double glazed window to the side aspect.

The bathroom has a matching suite comprising of a wc, wash hand basin & a bath with electric wall mounted shower with splashback tiling surrounding. There is tiled flooring, a heated towel rail & an opaque upvc double glazed window to the rear aspect.

### Parking:

The property is conveyed with a garage with an up and over door.

### Garden:

Chestnut Court is set within well kept communal grounds.

### Measurements:

Living Room	14'7" (4.47m) max x 11'5" 93.49m)
Kitchen	10'6" (3.21m) x 9'4" (2.85m)
Bedroom 1	14'7" (4.44m) x 7'8" (2.36m)
Bedroom 2	10'7" (3.23m) x 8' (2.44m)
Bathroom	7'4" (2.23m) x 5'3" (1.61m)

### Lease:

The vendor has notified Purbeck Property that this apartment is leasehold with the residue of a 999 year lease. Further lease details are available on request. We advise a buyer to arrange a legal representative to formally read through the lease & supporting documentation.

