



- A mature three bedroom semi detached home
- Situated in a quiet and desirable residential area
- Lounge and a nicely presented kitchen/dining room
- Main bedroom with lovely view over the stream and fields beyond
- Fully enclosed garden, garage and driveway
- Walking distance of town and neighbouring cities accessible



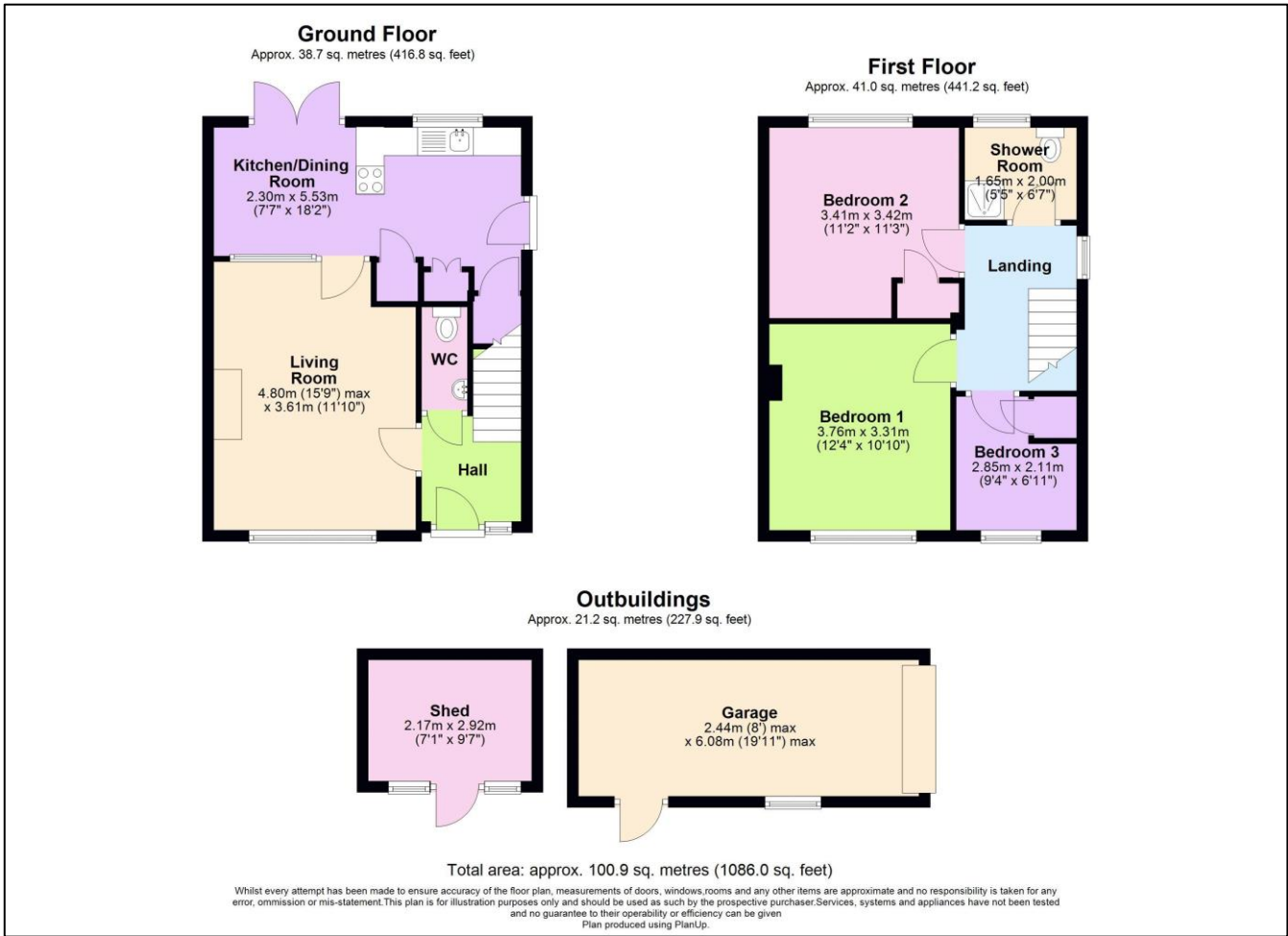
'With a picturesque outlook over the stream and fields beyond, this three bedroom semi detached home is in lovely order and is one to be viewed to be appreciated!'

Set in a quiet and peaceful location away from passing traffic, this three bedroom semi detached home has been very well cared for and is presented in very good order throughout. The property has an entrance hallway with stairs to the first floor which has been adapted to incorporate a ground floor wc, a light and bright lounge with a pleasant leafy outlook and the kitchen/dining room is across the rear with French doors to the garden. On the first floor there are three bedrooms with the front two bedrooms enjoying the view and there is an updated, well fitted shower room. The property has oil fired CH and is double glazed throughout. Offered for sale with no onward chain. Externally the front of the property is accessed via a quiet tree lined pathway and has an enclosed lawn from garden. At the rear the garden has a level seating area and a raised lawn with an accessible pathway. There is a rear access gate which leads to the single garage and the driveway.

Riverside Walk is a quiet and popular cul-de-sac within the Withies Park development. The property directly abuts the public footpath which runs alongside the stream and provides a pleasant walk in towards the town and the local schools. The location is also convenient for those looking to commute to the neighbouring cities.

Tenure: Freehold
Council Tax Band: C





Find us online!



www.samchiversproperty.co.uk



Facebook: Sam Chivers Estate Agents



Instagram: @samchiversestateagents

rightmove Zoopla

Score	Energy rating	Current	Potential
92+	A		
81-91	B		81 B
69-80	C		
55-68	D	56 D	
39-54	E		
21-38	F		
1-20	G		

Sam Chivers Estate Agents can also provide mortgage and conveyancing recommendations should you require such a service. Please contact our office on:

01761 411020 or email us at sales@samchiversproperty.co.uk

These sales particulars provide an approximate guide and form no part of a contract. It is the purchaser's responsibility to satisfy themselves that the property has been accurately described and that all fixtures and apparatus are functioning correctly. Your home may be at risk if you do not keep up repayments secured against it.