



**** DETACHED FIVE BEDROOM, FIVE BATHROOM HOME WITH NO CHAIN **** This larger than average property has previously been used as a care home and would be ideal for anyone looking for a ready made HMO. Benefitting from a large modern fully fitted kitchen, large spacious lounge/dining area, two office spaces, downstairs W.C, utility room, three bedrooms with en-suites and a main bathroom. There is a huge, converted loft room and a detached garage plus plenty of outdoor space with a driveway and gardens to the front side and rear. Located on a quiet cul-de-sac close to excellent network and transport links plus Manchester Airport and Wythenshawe Hospital. The property is central heated and double glazed throughout. Viewings are by appointment only and can be arranged by contacting the office.



Entrance Hall

Upvc door and double glazed window to the front. Ceiling light point, wall mounted radiator and carpeted stairs to the first floor.

Utility room 7' 11" x 3' 11" (2.423m x 1.203m)

Laminate flooring, ceiling light point, double glazed window to the side and plug points. Space for under counter washing machine and drier.

Downstairs W.C 6' 10" x 2' 11" (2.075m x 0.877m)

Vinyl flooring, double glazed window, ceiling light point and pedestal W.C.

Wash room 6' 10" x 3' 0" (2.076m x .923m)

Vinyl flooring, double glazed window, ceiling light point, wall mounted radiator and handwash basin.

Kitchen 13' 2" x 11' 9" (4.006m x 3.591m)

Modern fitted handles-less kitchen with a range of fitted wall and base units with contrasting worktops. Tiled floor, two ceiling light point, two double glazed windows, plug points, tiled splash backs, breakfast bar, stainless steel sink with mixer tap, space for range cooker with over head extractor and space for under counter fridge.

Lounge/Diner 19' 10" x 11' 10" (6.035m x 3.617m)

Laminate flooring, two large double glazed windows and larger double glazed patio door. Two ceiling light points, two wall mounted radiator, television point and plug points.

Office 7' 1" x 4' 8" (2.167m x 1.412m)

Vinyl flooring, ceiling light point and plug points.

Main Office 11' 6" x 6' 5" (3.503m x 1.968m)

Vinyl flooring, ceiling light point, double glazed window and plug points.

Bedroom 1 11' 8" x 2' 6" (3.547m x 0.762m)

Carpeted flooring, ceiling light point, double glazed window, wall mounted radiator, plug points and television point. Vinyl flooring, ceiling light point, double glazed window, pedestal W.C, handwash basin and shower cubicle.

En-suite 8' 6" x 3' 11" (2.595m x 1.186m)

Vinyl flooring, ceiling light point, double glazed window, pedestal W.C, handwash basin and shower cubicle.

Bedroom 2 10' 5" x 9' 8" (3.178m x 2.944m)

Carpeted flooring, ceiling light point, double glazed window, wall mounted radiator, plug points and television point.

En-suite 12' 7" x 4' 7" (3.839m x 1.406m)

Vinyl flooring, ceiling light point, double glazed window, pedestal W.C, handwash basin and shower cubicle.

Bedroom 3 13' 11" x 11' 1" (4.243m x 3.384m)

Carpeted flooring, ceiling light point, double glazed window, wall mounted radiator, plug points and television point.

En-suite 5' 4" x 4' 9" (1.632m x 1.447m)

Vinyl flooring, ceiling light point, double glazed window, pedestal W.C, handwash basin and shower cubicle.

Bedroom 4 9' 8" x 7' 4" (2.953m x 2.233m)

Carpeted flooring, ceiling light point, double glazed window, wall mounted radiator, plug points and television point.

Bedroom 5 9' 0" x 7' 4" (2.736m x 2.224m)

Carpeted flooring, ceiling light point, double glazed window, wall mounted radiator, plug points and television point.

Main bathroom oom18size}

Vinyl flooring, ceiling light point, double glazed window, pedestal W.C, handwash basin and shower cubicle.

Loft room 32' 7" x 12' 1" (9.931m x 3.683m)

Carpeted flooring, ceiling light point, two ceiling light points, plug points and large Velux window.

Externally

Iron gates to the front, imprinted concrete driveway, indian stone patio, lawned garden to the side and artificial grass and patio to the rear.

Detached garage 30' 1" x 12' 0" (9.167m x 3.670m)

Up and over door to the front, upvc door to the side, double glazed window, plug point and ceiling light point.



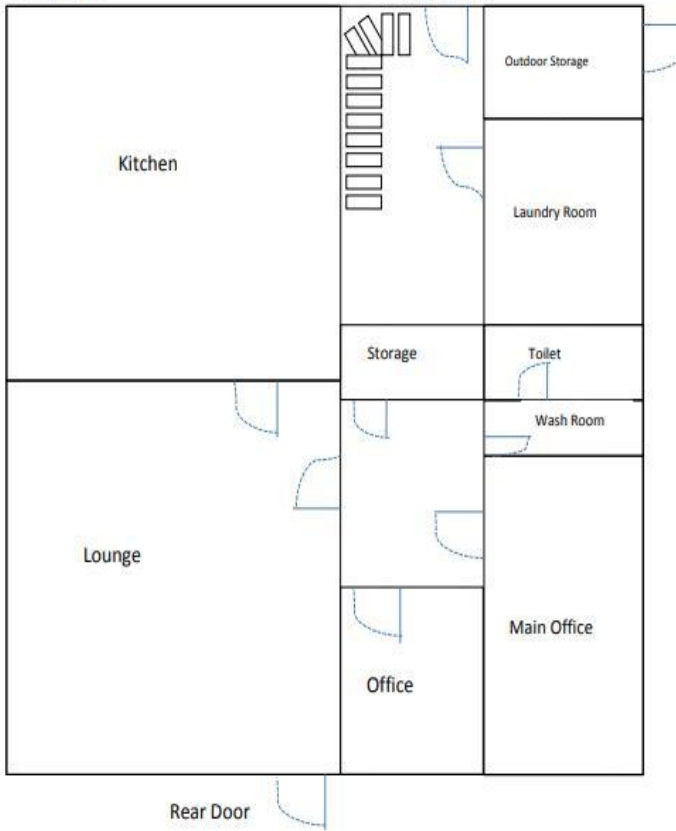
Thompson's
Estate Agents

Chalford Road
Manchester M23 2SG

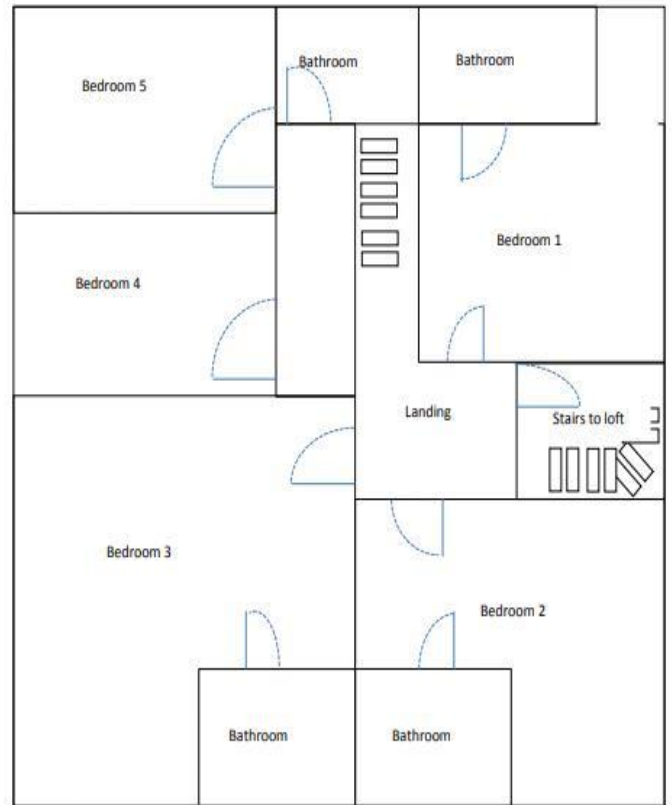
Offers in Excess of
£500.000



Ground Floor



1st floor



Loft

