

Retail
Development
Industrial
Investment
Office



31 Victoria Street, Douglas
Isle of Man, IM2 1SE

Phone: 01624 625100

Email: commercial@chrystals.co.im

FOR SALE POTENTIAL FOR A HMO

Glencoe Summerville, 6-8 Empress Drive,
Douglas, Isle of Man, IM2 4LQ
Asking price: £750,000



- Long established guesthouse
- 38 bedrooms and 2 apartments
- Mixture of doubles and single rooms with shared bathroom facilities
- Owners selling due to retirement

Description

A unique opportunity has arisen to acquire a terraced property comprising of 38 bedrooms and 2 apartments, Glencoe Summerville is situated just off Douglas promenade and ideally located within walking distance of local amenities.

The long established business provides an ideal HMO opportunity comprises of two guest houses converted into one – Glencoe and Summerville. Set over 4 floors and consists of a mixture of singles and doubles with shared bathroom facilities. Guests have the use of 2 communal kitchens, a laundry room, 10 WC's, 5 showers and two yards at the rear.

The property benefits from a 3 bedroom and 2 bedroom apartment. The owners reside in the 3 bedroom apartment and the 2 bedroom apartment is rented out to guests.

The property is serviced by oil central heating and has recently been renovated with the installation of a new fire alarm system, windows, exterior paintwork and new roof at the rear. The fire regulations and electrics are all up to date and are tested on a regular basis.

The business is not registered with the tourist board as their business is from overseas nationals coming to work on the island. The owners are selling due to retirement.

Services

Mains water, electricity, and drainage are connected.

Possession

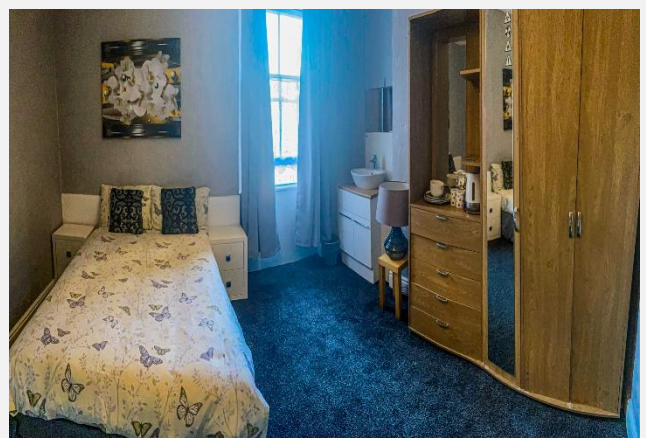
Vacant possession upon completion of all legal formalities

Legal Costs

Each party to pay their own legal costs.

Viewing

Further details and viewing arrangements strictly by appointment through the Agents, Chrystals.



Notice is hereby given that these particulars, although believed to be correct do not form part of an offer or a contract. Neither the Vendor nor Chrystals, nor any person in their employment, makes or has the authority to make any representation or warranty in relation to the property. The Agents whilst endeavouring to ensure complete accuracy, cannot accept liability for any error or errors in the particulars stated, and a prospective purchaser should rely upon his or her own enquiries and inspection. All Statements contained in these particulars as to this property are made without responsibility on the part of Chrystals or the vendors or lessors. The company do not hold themselves responsible for any expense which may be incurred in visiting the same should it prove unsuitable or to have been let, sold or withdrawn. Unless otherwise stated all prices and rates are quoted exclusive of Value Added Tax (VAT). Any intending purchaser or lessee must satisfy themselves as to the incidents of VAT concerning any transaction.