



VILLAGE ESTATES



• EST.1993 •

93 Main Road, Sidcup, Kent DA14 6ND

Tel: 0208 302 1002

www.village-estates.com

Email: sidcup@village-estates.com



Off Road Parking

Four Piece Bathroom

Easy Reach of A20/M25

Extended Kitchen

Spacious Kitchen Diner

100' Rear Garden



67 Palm Avenue

Sidcup, DA14 5JF

£375,000

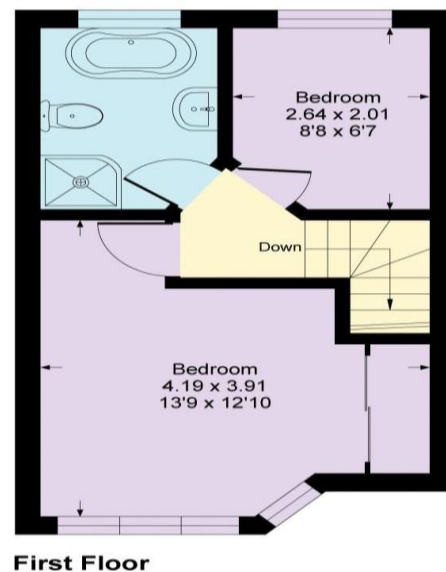
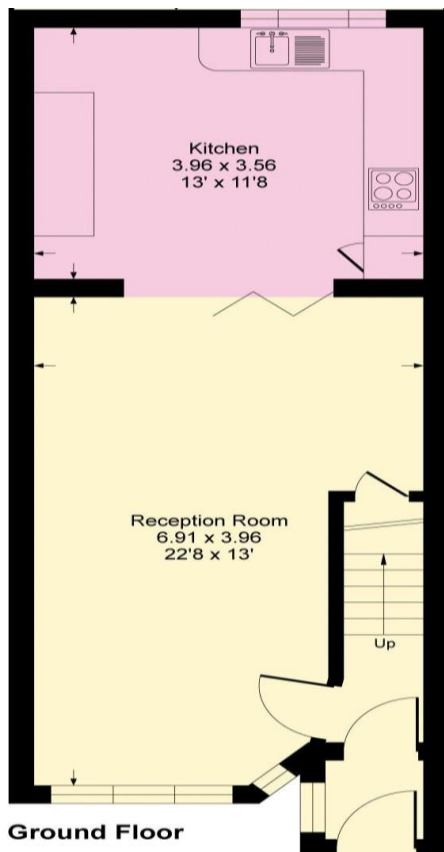
Excellent value for money, Village Estates are pleased to offer for sale a two-bedroom extended terraced house situated in a quiet road. We feel this would be for a first-time buyer looking to get on the property ladder or even a small family. The property benefits from a 100' rear garden, off road parking and a four-piece family bathroom, just to name a few qualities this home has to offer.

EPC RATING: C

COUNCIL TAX BAND: C

TENURE: Freehold

LEASE TERM: Not Applicable



CONSUMER PROTECTION FROM UNFAIR TRADING REGULATIONS 2008

Please note that any services, heating system or appliances have not been tested, and no warranty can be given or implied as to their working order. You are advised to obtain verification from your solicitor or surveyor. References to the tenure of a property are based on information supplied by the seller. We have not had sight of the title documents and a buyer is advised to obtain verification from their solicitor. Items shown in photographs are not included unless specifically mentioned within the sales particulars, but may be available by separate negotiation. Whilst every attempt has been made to ensure the accuracy of the floor plan contained here, measurements of doors, windows, rooms and any other items are approximate and no responsibility is taken for any error, omission, or mis-statement. We advise you to book an appointment to view before embarking on any journey to see a property, and check its availability. The accuracy of these details are not guaranteed and they do not form part of the contract.