



VILLAGE ESTATES

• EST.1993 •



93 Main Road, Sidcup, Kent DA14 6ND

Tel: 0208 302 1002

www.village-estates.com

Email: sidcup@village-estates.com



Chain Free

**Adjacent to Sidcup Mainline
Station**

Sidcup Leisure Centre

Utility Room

Residents Parking

Bird & Rose Bruford Colleges



21 Greenwood Close
Sidcup, DA15 9AD

£285,000

A purpose built three-bedroom first floor flat within close proximity to Sidcup mainline station and local shops. A great opportunity to purchase a sizable flat and improve the current condition/décor to your own taste. Offered to the market chain free with an 86-year lease (sellers will not be extending for sale).

EPC RATING: C

COUNCIL TAX BAND: C

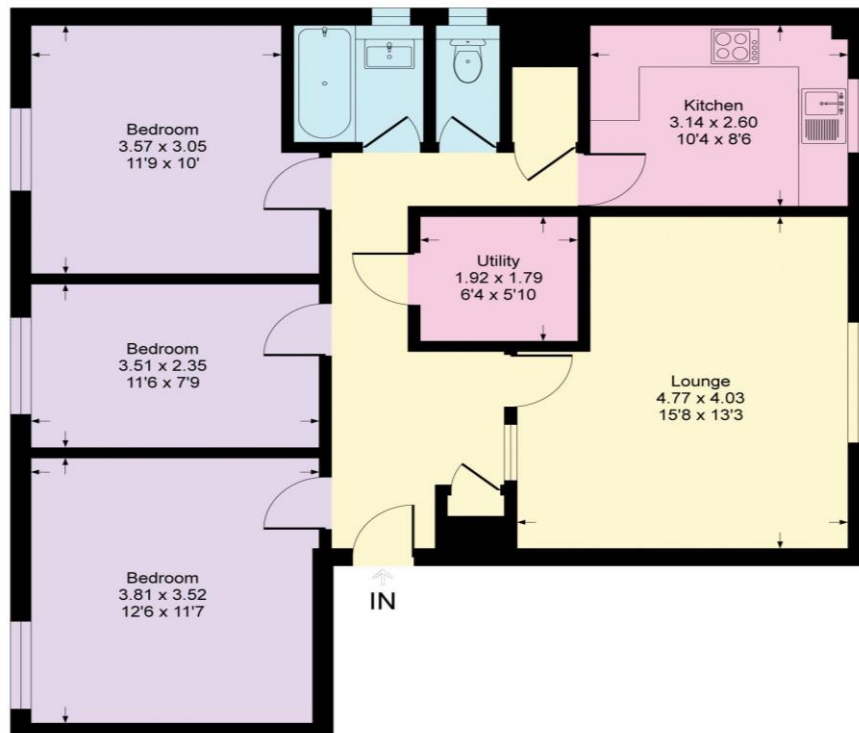
TENURE: Leasehold

LEASE TERM: 86 Years



Greenwood Close, DA15

Approximate Gross Internal Area = 83 sq m / 898 sq ft



CONSUMER PROTECTION FROM UNFAIR TRADING REGULATIONS 2008

Please note that any services, heating system or appliances have not been tested, and no warranty can be given or implied as to their working order. You are advised to obtain verification from your solicitor or surveyor. References to the tenure of a property are based on information supplied by the seller. We have not had sight of the title documents and a buyer is advised to obtain verification from their solicitor. Items shown in photographs are not included unless specifically mentioned within the sales particulars, but may be available by separate negotiation. Whilst every attempt has been made to ensure the accuracy of the floor plan contained here, measurements of doors, windows, rooms and any other items are approximate and no responsibility is taken for any error, omission, or mis-statement. We advise you to book an appointment to view before embarking on any journey to see a property, and check its availability. The accuracy of these details are not guaranteed and they do not form part of the contract.